

<Variant Name>

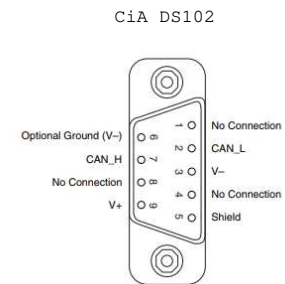
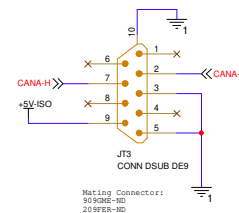
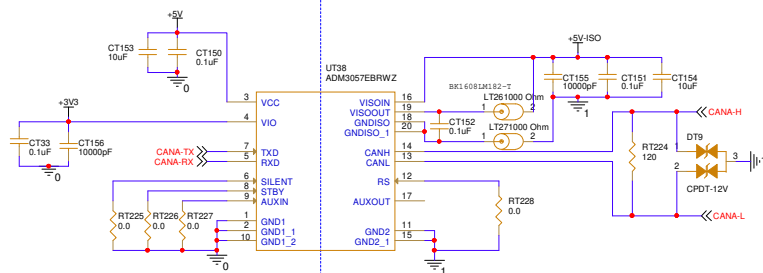
Wolfspeed

Title ControlCard

Size A Document Number DUAL INVERTER CONTROLLER V1-3

Rev V1.3

Date: Monday, February 05, 2024 Sheet 1 of 16



<Variant Name>

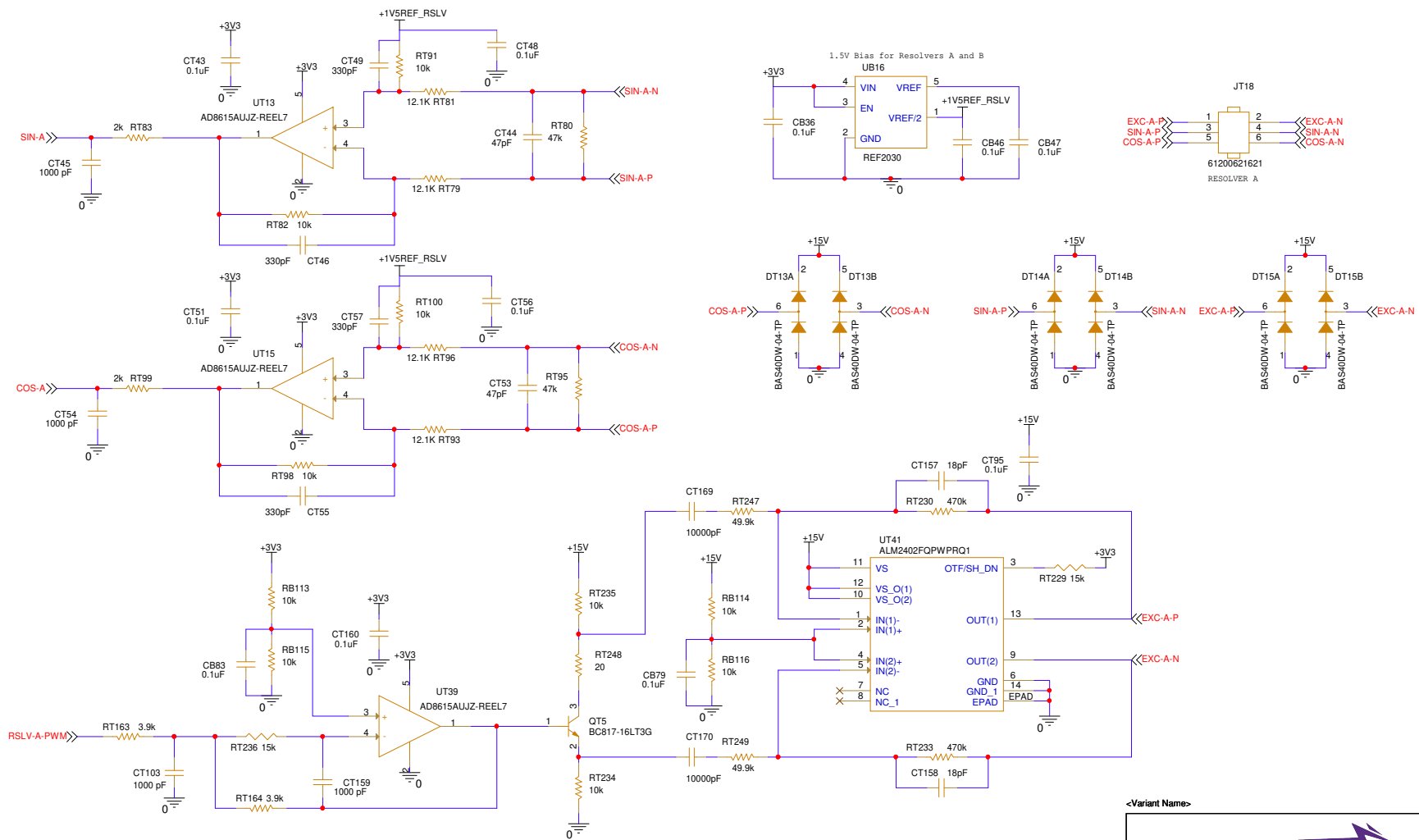


Title CAN

Size A Document Number DUAL INVERTER CONTROLLER V1-3

Rev V1.3

Date: Monday, February 05, 2024 Sheet 1 of 16



<Variant Name>

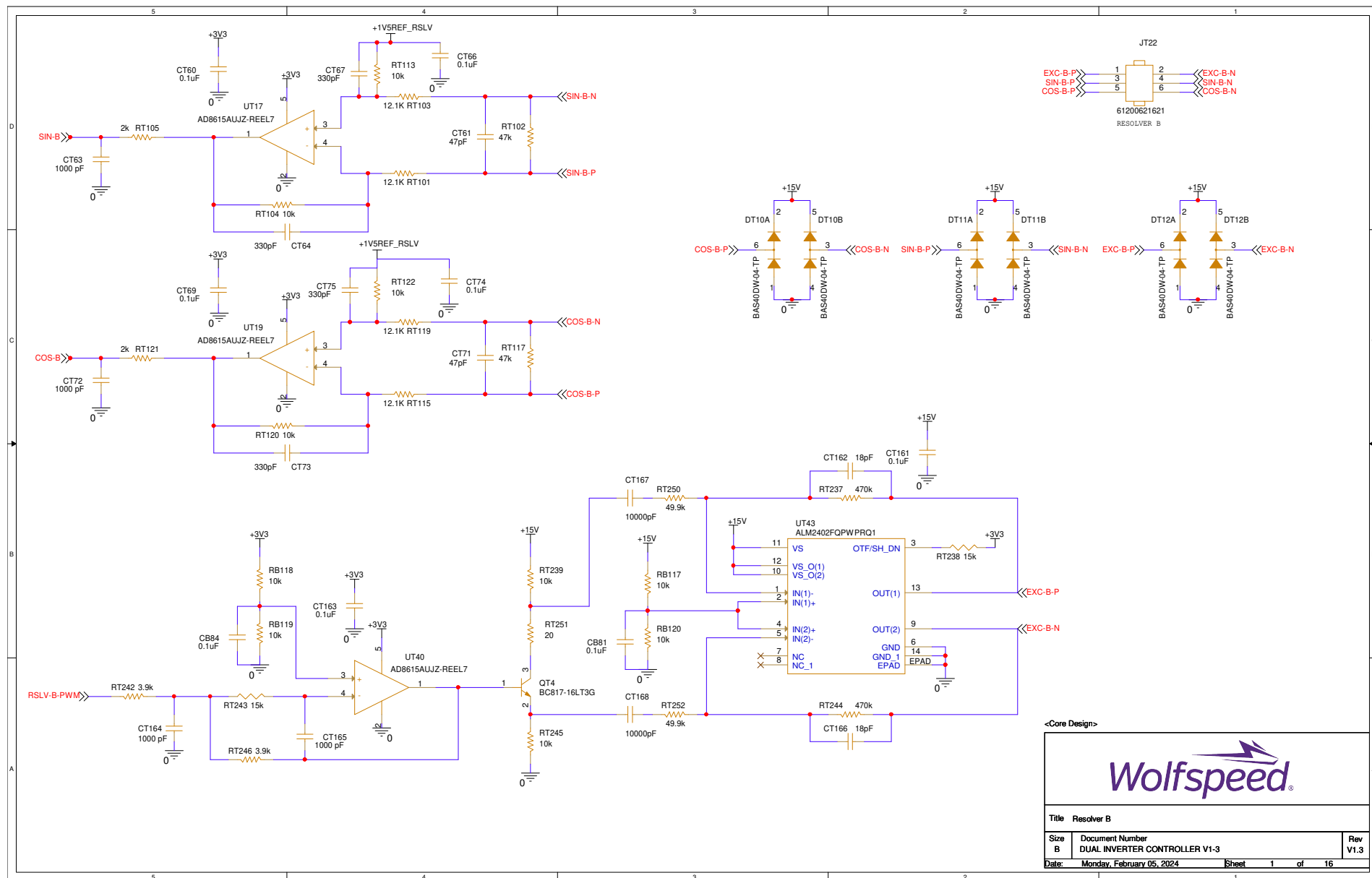
Wolfspeed

Title Resolver A

Size B Document Number
DUAL INVERTER CONTROLLER V1-3

Rev
V1.3

Date: Monday, February 05, 2024 Sheet 1 of 16



5

4

3

2

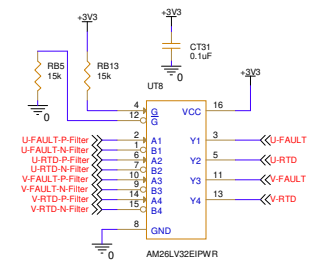
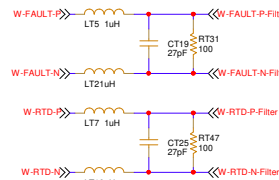
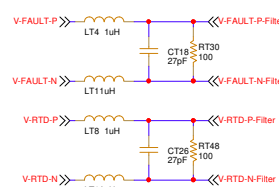
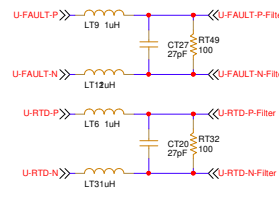
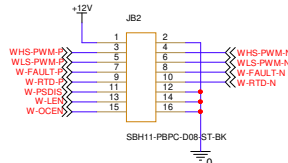
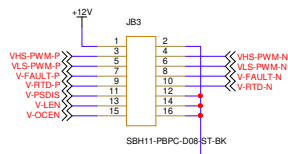
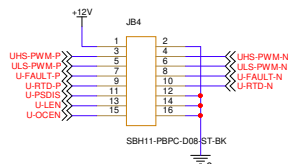
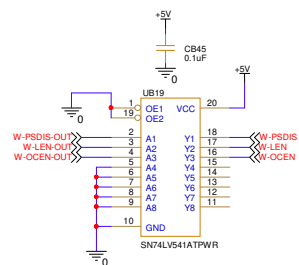
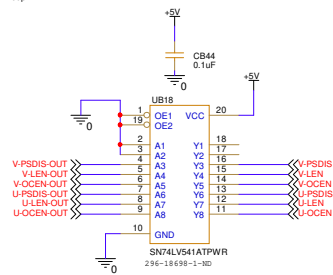
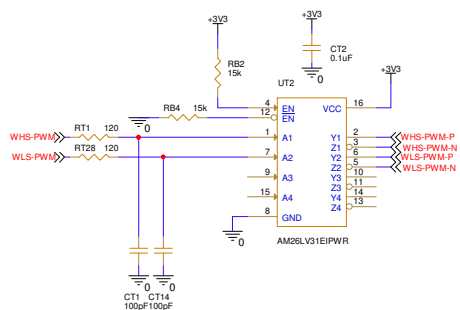
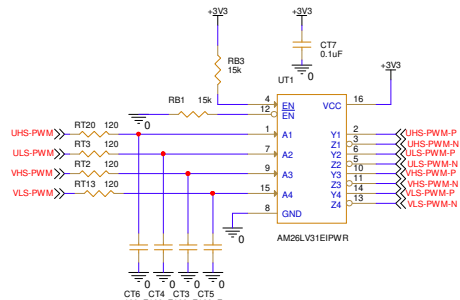
1

D

C

B

A



<Core Design>

Title Gate Driver Interface UVW

Size A	Document Number DUAL INVERTER CONTROLLER V1-3	Rev V1.3
--------	---	----------

Date: Monday, February 05, 2024

Sheet 2 of 16

5

4

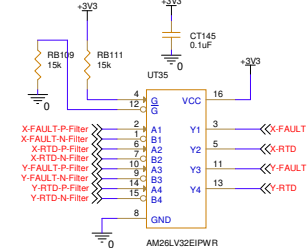
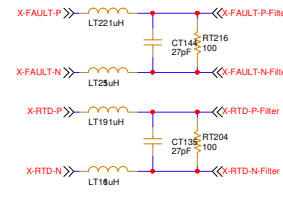
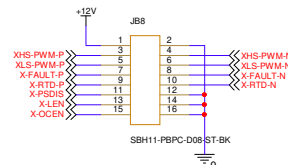
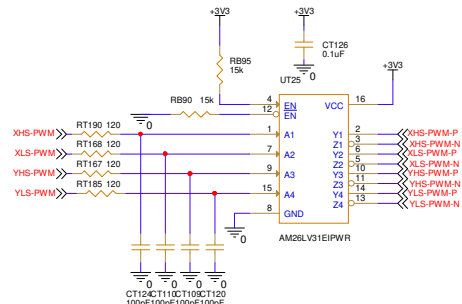
3

2

1

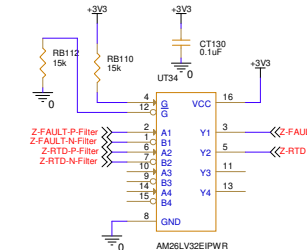
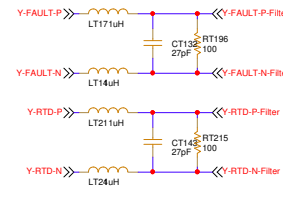
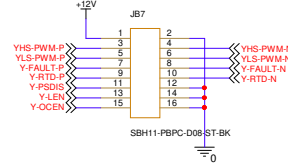
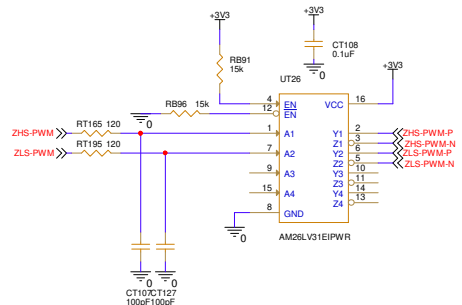
D

D



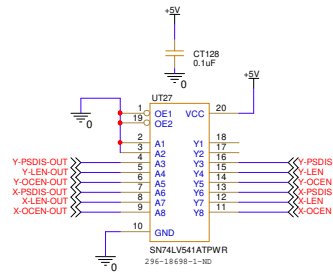
C

C



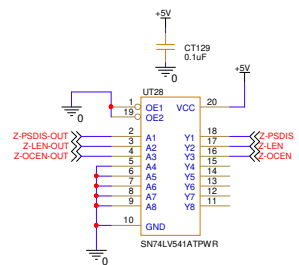
B

B



A

A



<Core Design>



Title Gate Driver Interface XYZ

Size A Document Number DUAL INVERTER CONTROLLER V1-3

Rev V1.3

Date: Monday, February 05, 2024

Sheet 3 of 16

1

TWEIA-086-B-1

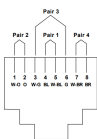
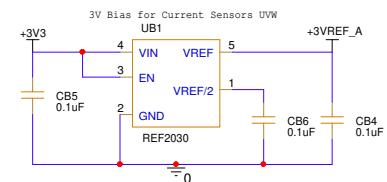
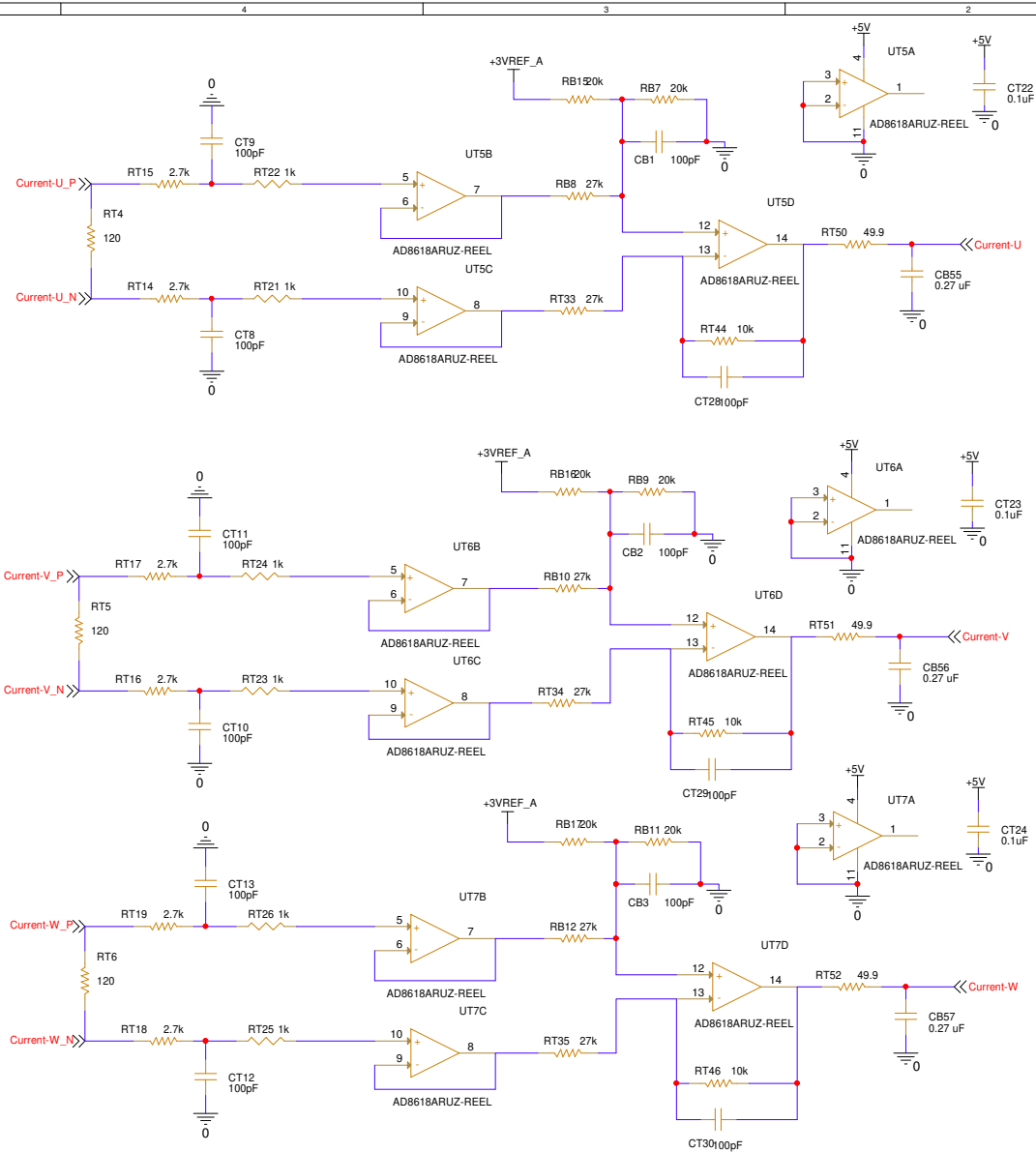
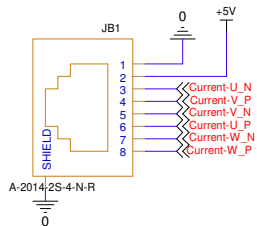


Figure 8-2: Optional eight-position jack pinout assignment (TWEIA-086-B-1)



<Core Design>

Wolfspeed

Title Current Sensor UVW

Size B Document Number
DUAL INVERTER CONTROLLER V1-3

Rev
V1.3

Date: Monday, February 05, 2024 Sheet 4 of 16

TW61A-08B-1

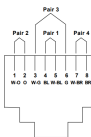
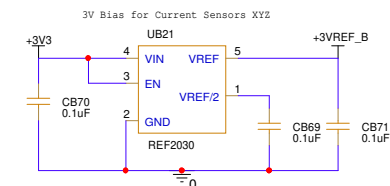
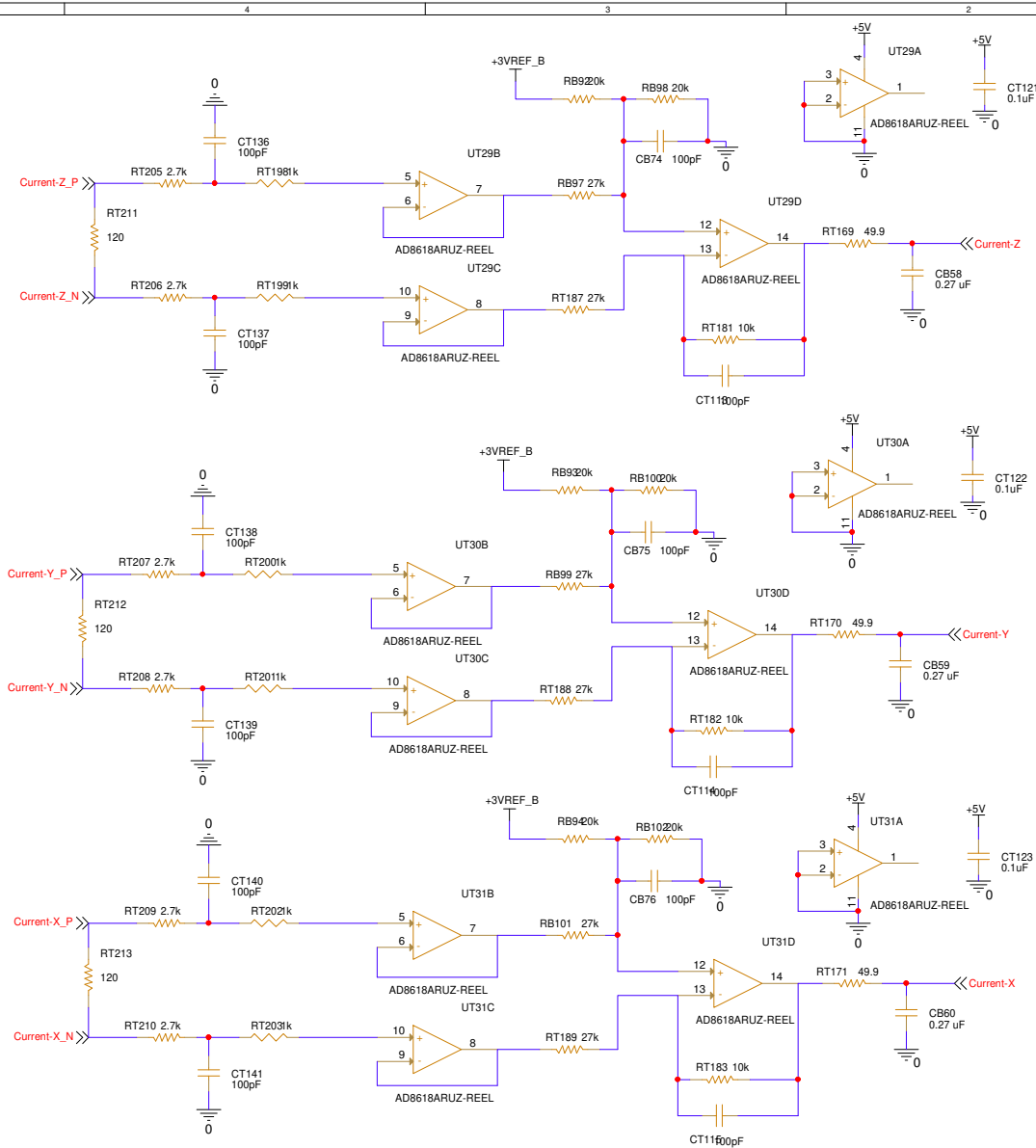
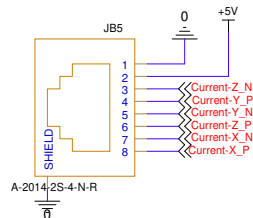


Figure 8-2: Optional eight-position jack pinout assignment (TW61A)



<Core Design>

Wolfspeed

Title Current Sensor XYZ

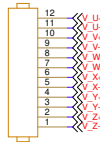
 Size B Document Number
 DUAL INVERTER CONTROLLER V1-3

 Rev
 V1.3

Date: Monday, February 05, 2024 Sheet 5 of 16

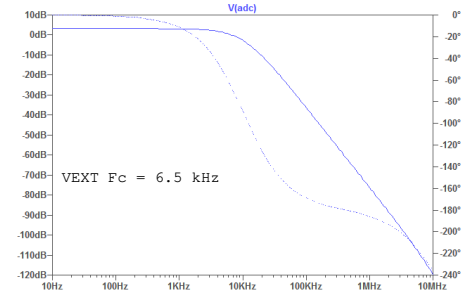
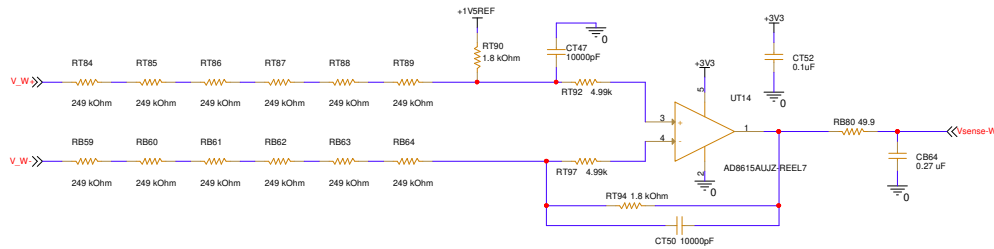
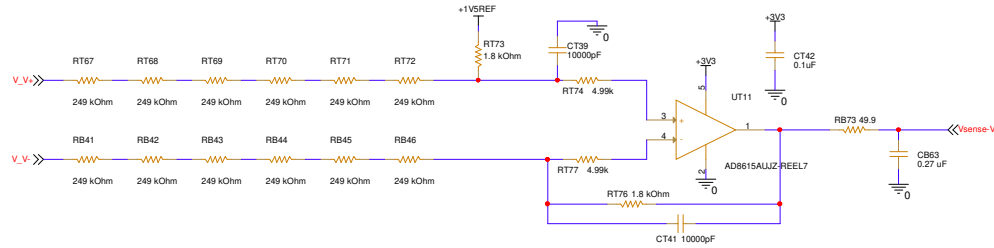
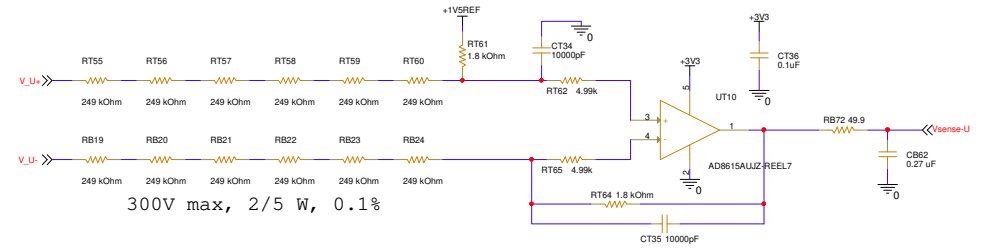
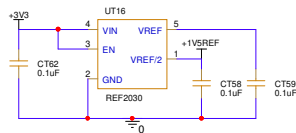
HV Differential

J143



1766877

1.5V Bias for Voltage Sensors UVW, XYZ, DC



<Core Design>

Wolfspeed

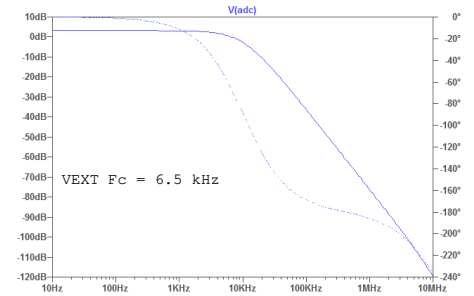
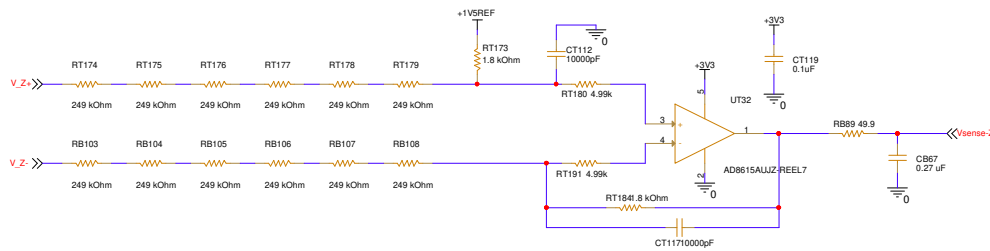
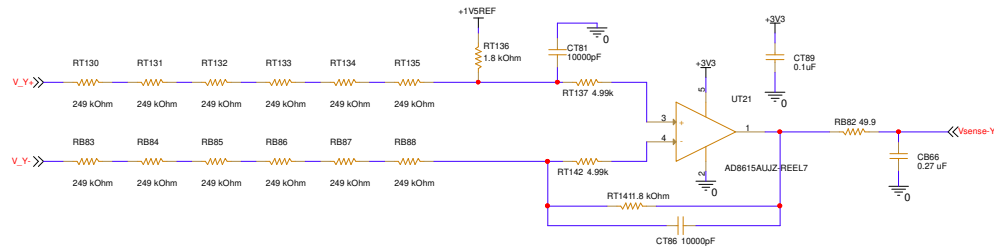
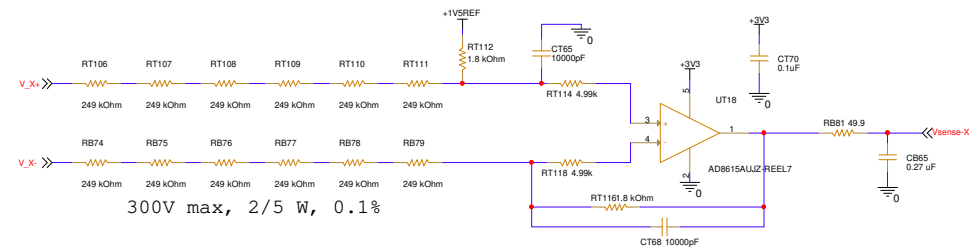
Title Voltage Sense UVW

Size A Document Number DUAL INVERTER CONTROLLER V1-3

Rev V1.3

Date: Monday, February 05, 2024

Sheet 7 of 16



<Core Design>

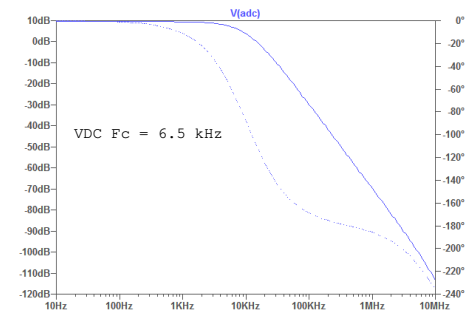
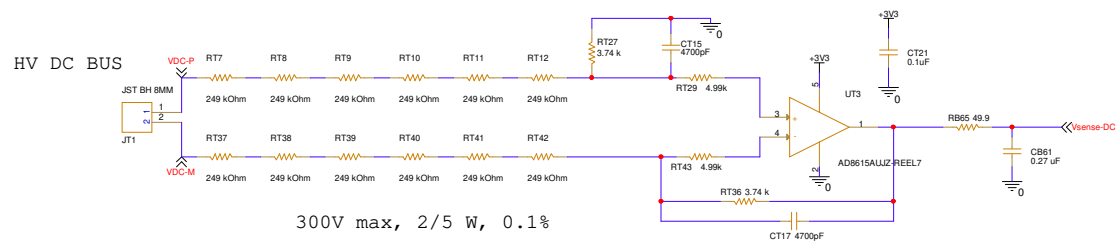
Wolfspeed

Title Voltage Sense XYZ

Size A Document Number DUAL INVERTER CONTROLLER V1-3

Rev V1.3

Date: Monday, February 05, 2024 Sheet 8 of 16



<Core Design>

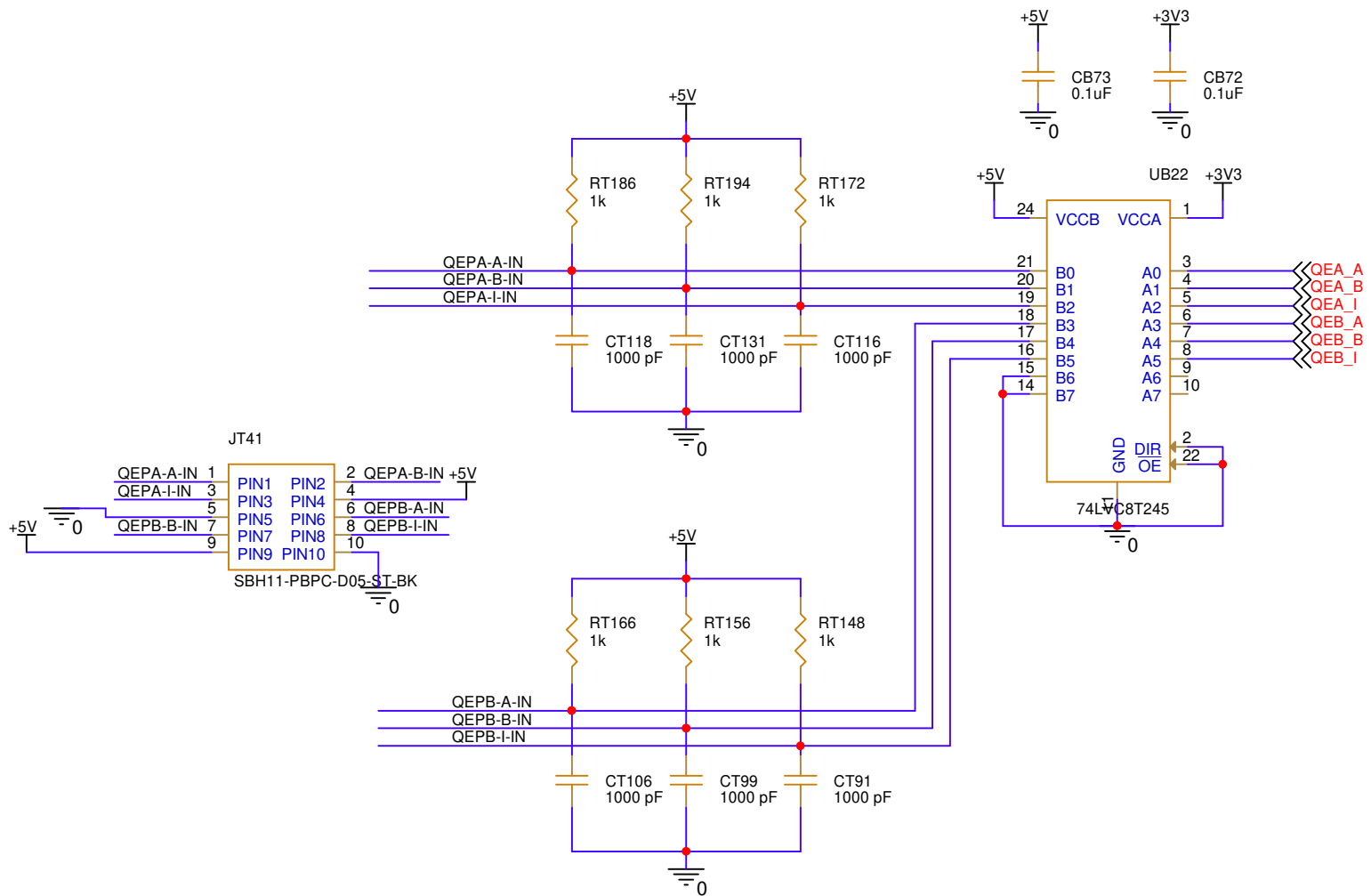


Title Voltage Sense VDC

Size A Document Number DUAL INVERTER CONTROLLER V1-3

Rev V1.3

Date: Monday, February 05, 2024 Sheet 9 of 16



<Core Design>



Title QEP

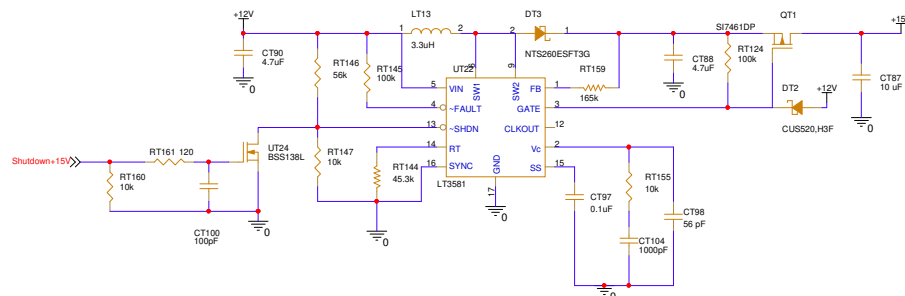
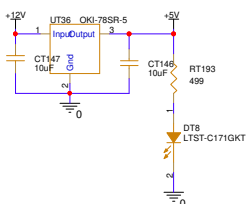
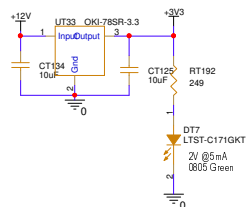
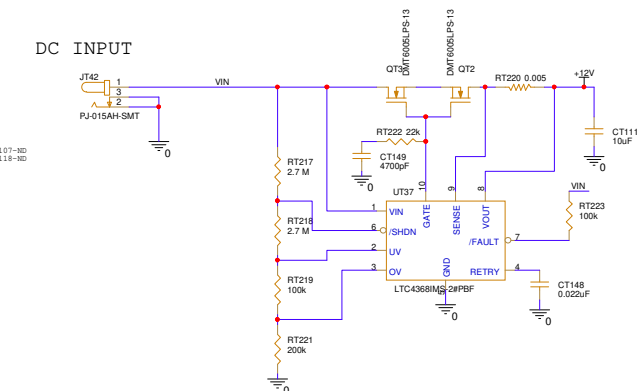
Size A Document Number DUAL INVERTER CONTROLLER V1-3

Rev V1.3

Date: Monday, February 05, 2024 Sheet 11 of 16

DC INPUT

Power Supply:
PSAC60N-120 993-1107-MD
PSAA30N-120 993-1118-MD
Plug: CP3-1000-MD



<Core Design>

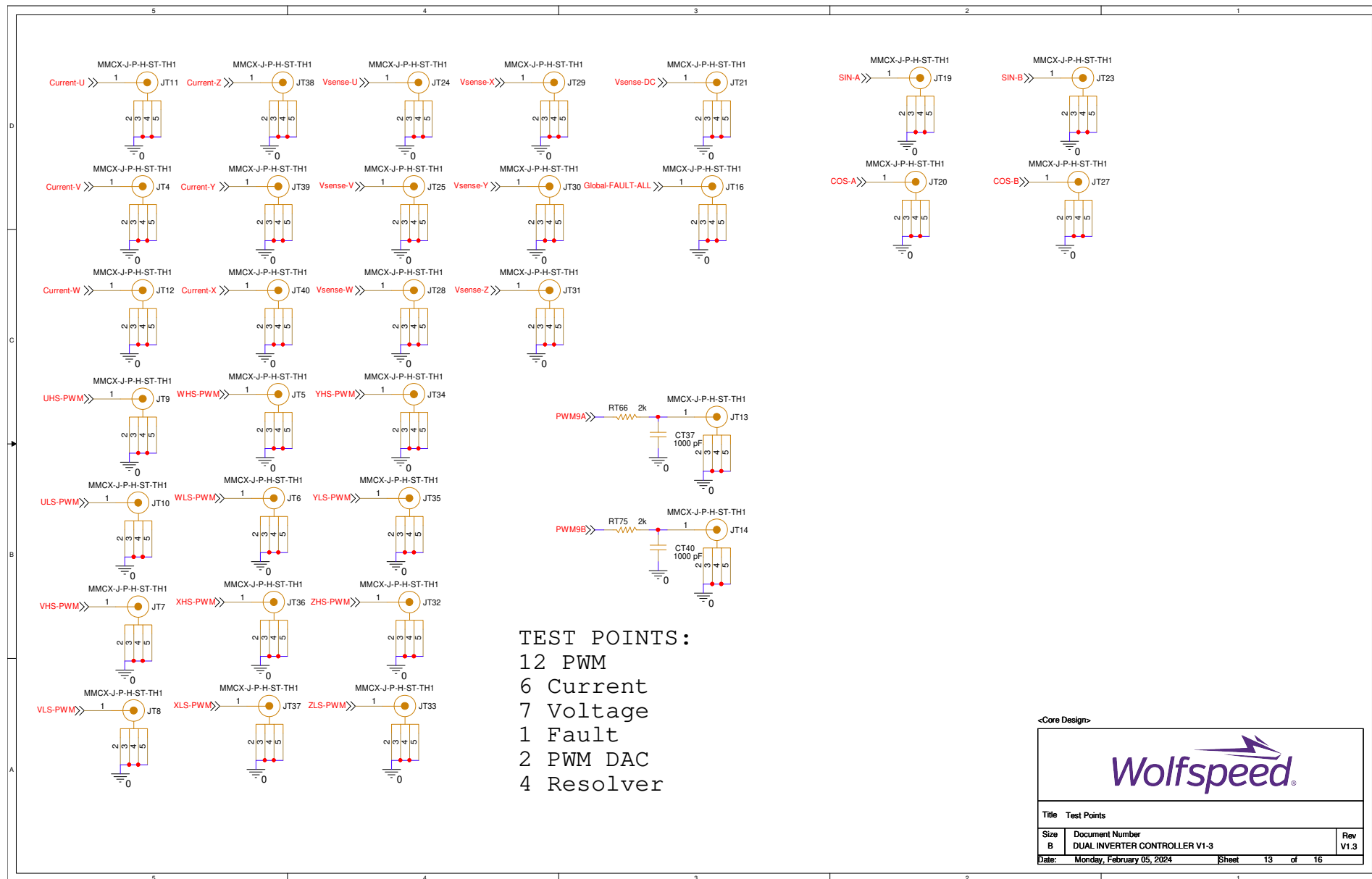


Title Power Supply

Size A Document Number DUAL INVERTER CONTROLLER V1-3

Rev V1.3

Date: Monday, February 05, 2024 Sheet 12 of 16



<Core Design>



Title Test Points		
Size B	Document Number DUAL INVERTER CONTROLLER V1-3	Rev V1.3
Date: Monday, February 05, 2024	Sheet 13	of 16

Revision History:

V1.0: 5/7/2020

-Initial Release

V1.1a: 8/20/2020

-Corrected ControlCard pinout mismatch

-ADM3057 CAN transceiver + power

-Cleaned silkscreen text

V1.1b: 10/16/2020

-Corrected resolver circuit wiring in OPA2209

-Changed RT220 to 5mOhm, set limit to 10A for increased inrush current

V1.2A: 12/30/2020

-Changed resolver circuit to ALM2402

V1.3: 02/05/2024

-Removed deprecated company branding from silkscreen

-Corrected COS/SIN resolver bias on non-inverting op amp pin

<Core Design>



Title Revision History

Size A	Document Number DUAL INVERTER CONTROLLER V1-3	Rev V1.3
-----------	--	-------------

Date: Monday, February 05, 2024	Sheet 16 of 16
---------------------------------	----------------